

2020 MUNICIPAL CENSUS



**TOWN OF
TABER**



GROWING IN TABER

Following the conclusion of the 2020 Municipal Census, the Town of Taber's population is 8,711 residents. The official census date was October 1, 2020 and the census was officially completed on December 10, 2020. A total of 3,474 households were identified during the enumeration process with responses collected for 3,445 (99.2%) households.

The final count shows an increase of 331 residents or a 3.9% increase from the 2015 Municipal Census which counted a total of 8,380 residents. This is an annual increase a 0.79%. Taber's average household size is 2.75 residents, increased from 2.45 residents in the 2015 census. This increase shows promising growth for Taber.

3,474

residential units
identified in Taber

8,711

total population in
2020

99.2%

households provided
a response.

HISTORICAL POPULATION

Taber's Population as of 2020 is 8,711. Figure 1 shows Taber's population has steadily increased over the past 49 years.

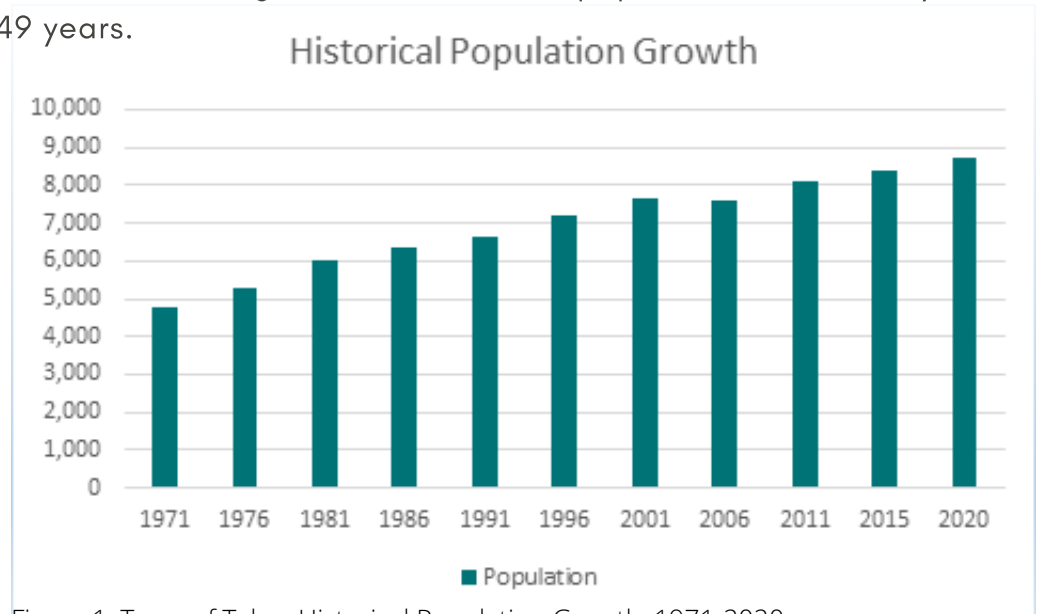
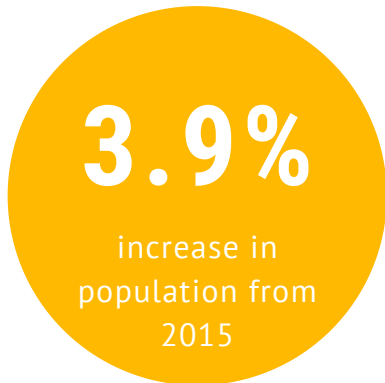


Figure 1: Town of Taber Historical Population Growth, 1971-2020

Figure 2 shows the average annual growth rate, which indicates aside from the period between 2001-2006, Taber has experienced some annual growth every year in the past 49 years. The annual growth rate is measured by dividing the percentage of increase or decrease between census years by the number of years between each census to find an annual average. Taber's population growth rate is currently 0.78% annually. This is down from 0.85% in 2015 and 1.35% per year in 2011. This could be attributed to decreasing activity in the oil and gas sector, one of the main drivers of Taber's economy, and smaller family sizes. The average household size has increased from 2.63 in 2015 to 2.75 in 2020. This change is very minor and appears to reflect that couples are choosing to have less children.

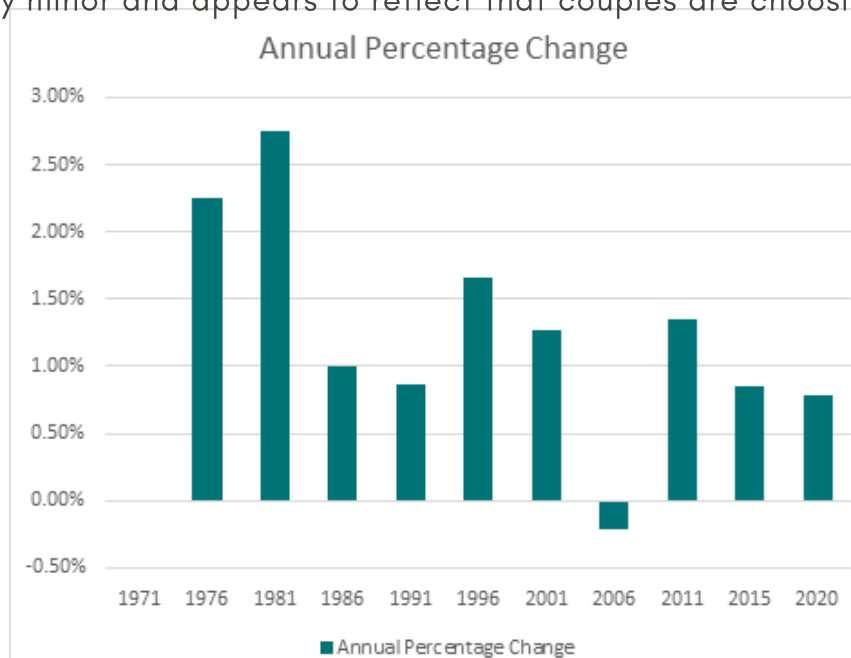


Figure 2: Annual Percentage Change 1971-2020, Town of Taber,

POPULATION

A population pyramid is an important indicator of the demographic make-up of a geographic region. It indicates if a population is in growth or decline as well as providing details of life expectancy.

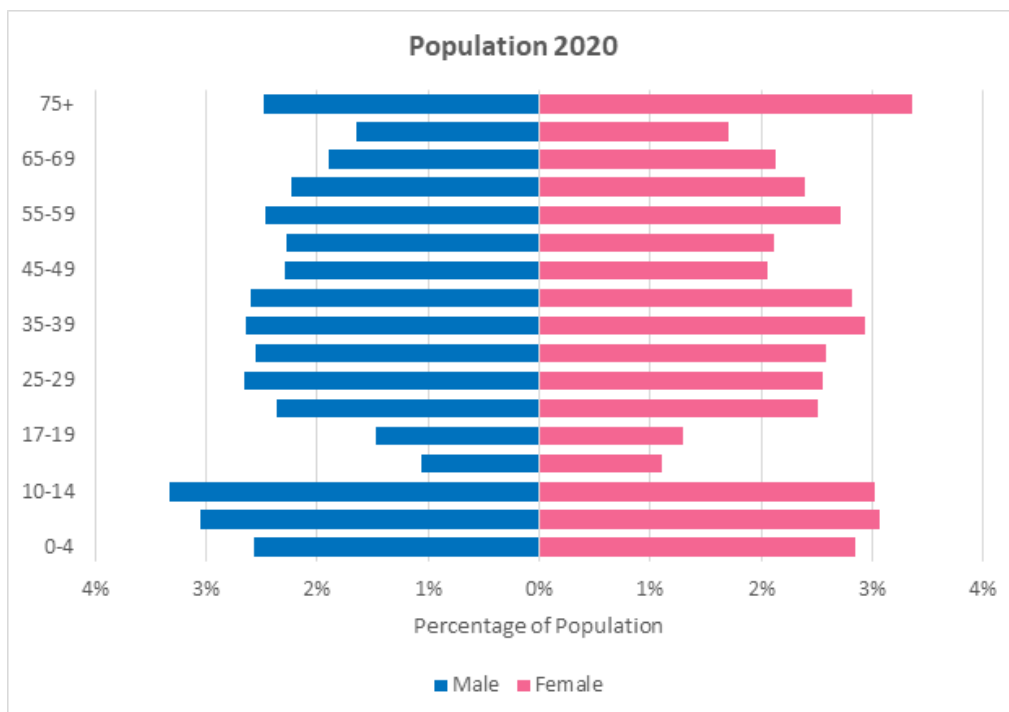


Figure 3: Population Pyramid, Town of Taber, 2020

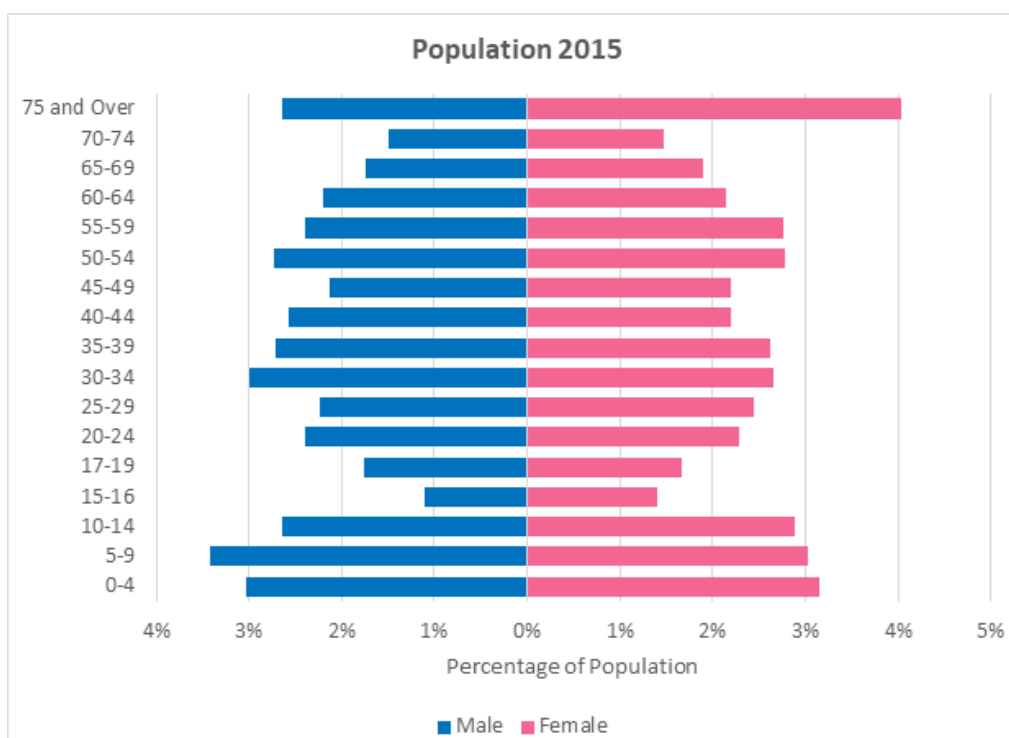


Figure 4: Population Pyramid, Town of Taber, 2015

The Town of Taber’s population pyramid indicates Taber has slightly more female residents than male at 3,598 and 3,455 residents, respectively. Not shown in the pyramid are residents who did not provide a response to their gender (1647 residents/18.91%) and those who selected “Other Gender Identity” (11 residents/0.13%), (see figure 3.3). There is a concentration of children and seniors, with the smallest number of residents being in the 15-29 age groups. The wider base indicates a growing population as people continue to have children and the wider top is an indication of high life expectancy rates. The low number of young adults in the 15-19 age groups coincides with the decline in population between the 2001 and 2006 censuses.

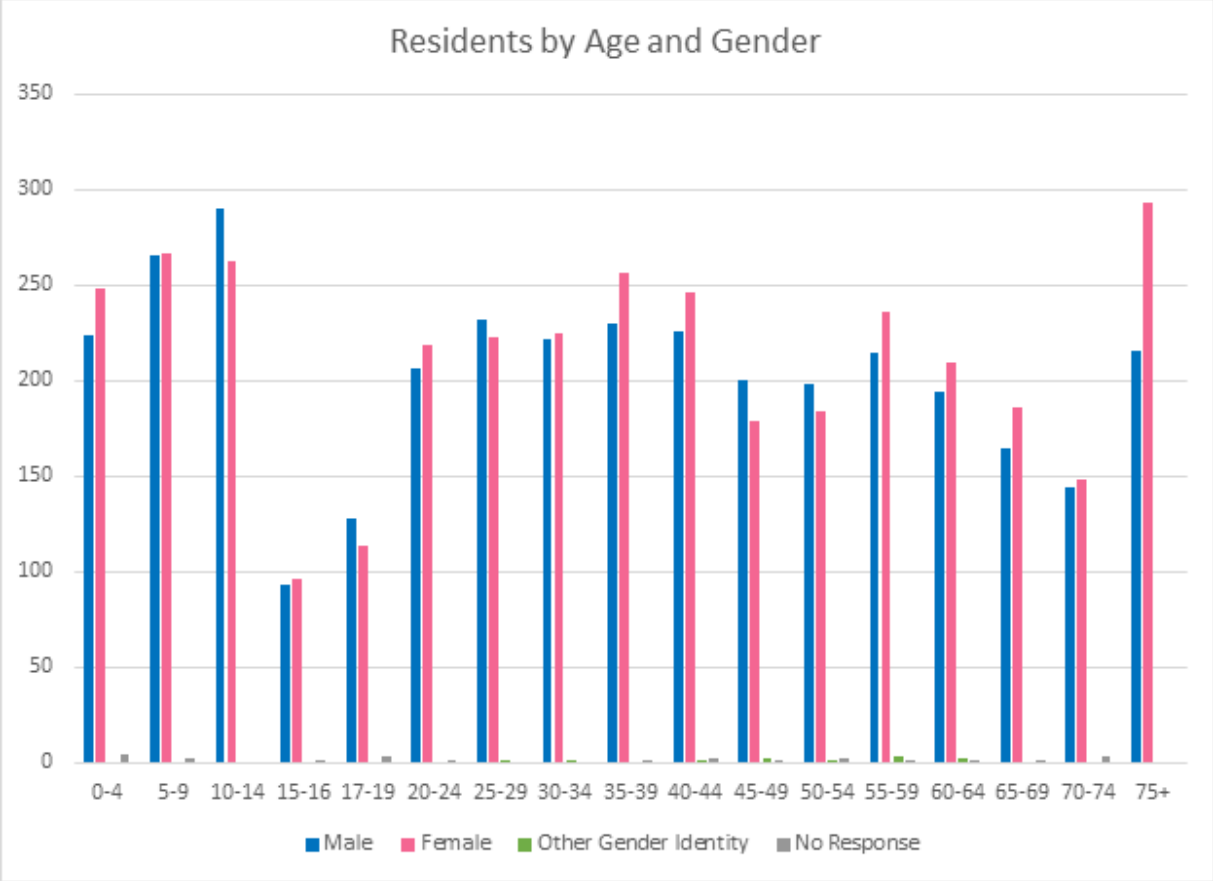


Figure 5: Taber Residents by Age and Gender, 2020



HOUSEHOLD SIZE

Taber has an average household size of 2.75 residents and is predominantly made up of two person households, followed by one person households. There is a close number of three and four person households. The household sizes reinforce that residents are continuing to have smaller families and is also reflective of the senior population who are often empty nesters with no children living at home.

2.75
Average number of residents in a household

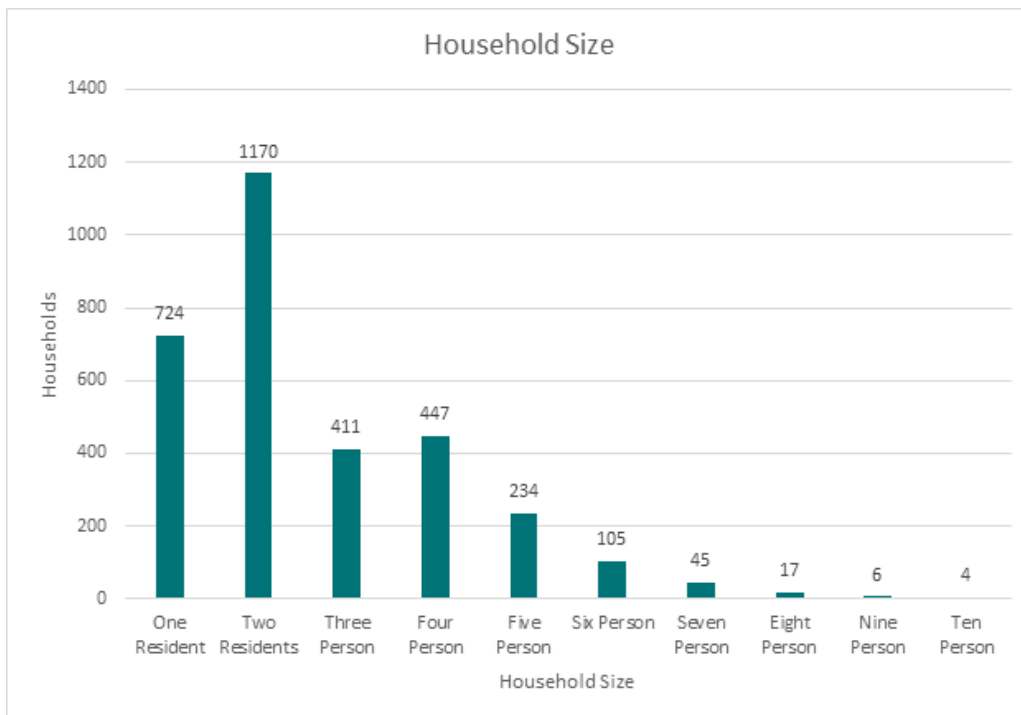


Figure 6: Household Size, Town of Taber, 2020

There was a total of 3,474 residential addresses identified during the enumeration processes. This includes assisted-living facilities, the Woman’s Shelter, and properties that are not within a residential district that include living quarters such as apartments above downtown buildings. The Taber Hospital was also included as some patients who have extended stays in the hospital are considered residents under the enumerating procedures set out by the Government of Alberta. Figure 3.0 below does not include Taber Hospital, assisted-living facilities, or the Woman’s shelter as these facilities provided aggregate data that reflects large household sizes.



PRIMARY LANGUAGE

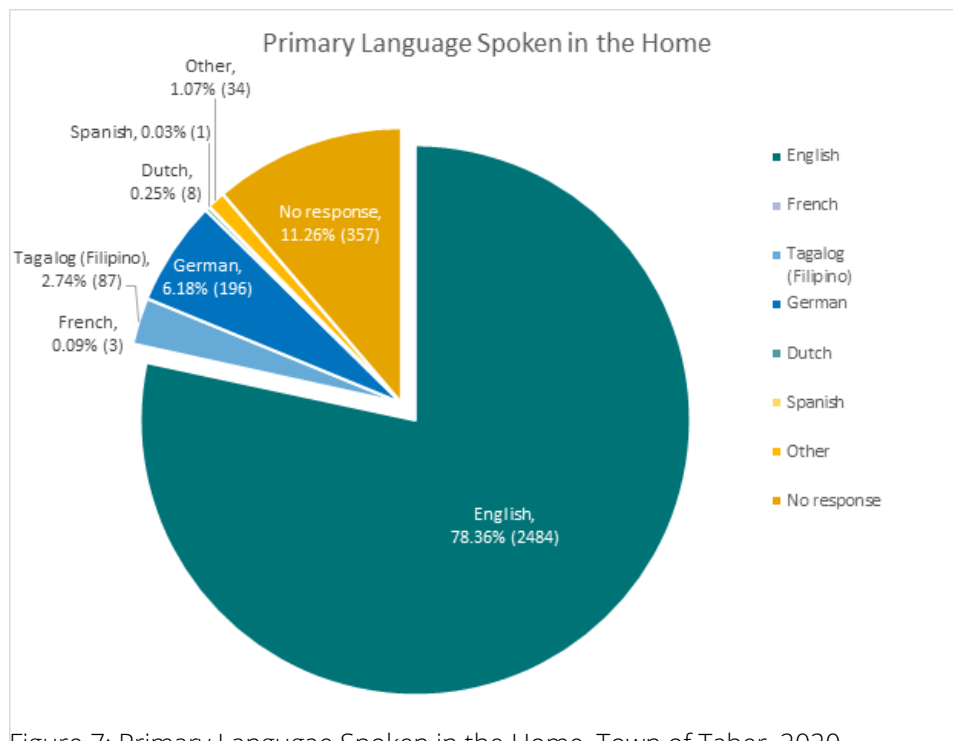


Figure 7: Primary Language Spoken in the Home, Town of Taber, 2020

Taber is a culturally diverse community with residents speaking a variety of languages. Although the majority of Taberites indicated using English as their primary language in their home, German and Tagalog (Filipino) were also popular choices.

Knowing that many in the Low-German Mennonite (LGM) community speak Low-German and may not read at all, the Town of Taber made efforts to engage this population in new ways that had not been done in previous census years. A total of eight Enumerators were hired to collect census data, half of the Enumerators spoke Low-German and all were provided a video explaining the purpose of the census in Low-German. This provided all Enumerators the opportunity to communicate with the LGM community to encourage participation and further their understanding of the census. For additional impact, the Town of Taber partnered with the local branch of Family & Community Support Services (FCSS). FCSS, who translated the census questions, and all census ads into Low-German was also responsible for the video created for Enumerators. As FCSS is a major resources for the LGM community they are well connected within the community and assist members of the LGM community regularly. FCSS often communicates with the LGM community through WhatsApp, a web-based messaging platform, and they were able to send out the same video to their contact list at the start of the census so residents were prepared when they received their census pins to access the census website. FCSS also assisted the LGM community in completing the census. We believe these factors are reflected in the increase of German speaking households, up 1.8% from 2015 and the high participation rate in the census.

Residents were asked “What is the primary language spoken in your home?”, the question limited residents to choosing just one option for the household which may not be reflective of the entire household or households where more than one language is spoken often. This limitation could mean more people chose English as the primary language when they may have chosen multiple answers if the option was available, therefore this question may not accurately reflect the community’s full language preferences.





A GREAT PLACE TO GROW

The Town of Taber's 3.9% population increase from 2015-2020 reflects Taber is a growing community with much to offer. With many amenities and services to offer residents and a thriving agri-business community it is likely Taber will continue to grow into the future.

Given current trends, it is anticipated the average household size will remain small as young professionals locate in Taber to take advantage of the growing opportunities in agriculture and value-added processing.

The division of primary languages spoken in the home indicates a diverse population with two prominent minority groups, Low German Mennonites and Filipinos. With a variety of services and supports in place, Taber is well positioned to continue to welcome new comers and grow a diverse community.

All 8,711 residents of the Town of Taber are unique and contribute to the community in a variety of ways. Together they are a caring and generous community that make Taber a great place to grow.

