

# No more sorting!



White or Colored Office Paper



Paper Egg Cartons



Paper Milk/Juice Cartons



Empty Aerosol Containers



#1 - #7 Plastic Bottles, Jugs



#1 - #7 Plastic Tub  
Screw-Top Jars



Cardboard  
Empty Paper Bags



Mail  
Greeting Cards



Paperboard  
Boxes



Cans



Clean pie pans  
and balled  
aluminum foil  
(2" or larger)



Blueprints



Paperback  
Books



Magazines  
Brochures  
Catalogs



Newspapers  
Inserts



Loose Metal Jar Lids  
Steel Bottle Caps



File Folders



- All Shredded Paper should be bagged so it doesn't make a mess when it is collected by the recycling truck.

\*Flatten all cardboard boxes, cut them up to fit

\*Empty & rinse all containers



## PLEASE NO:

- \* Scrap Metal, or Electronic Waste (Batteries, cell phones, etc)
- \* Plastic bags, small lids or caps, 6-pack holders
- \* Needles or syringes
- \* Glass, ceramics or Pyrex
- \* Paint, pesticides, oil & cleansers
- \* STYROFOAM
- \* Organic material and food waste
- \* Waxed paper/board
- \* Stickers or address label sheet waste
- \* Plastics other than the listed #1-7

# More Recycling & Disposal Options



## Did you know we have Free Public Recycling Drop-Off Sites?

We have 2 large item/volume recycling drop off centers in town, conveniently located downtown on 50<sup>th</sup> Avenue off 57<sup>th</sup> Street as well as at the Town's Transfer Station. We have several large mixed bins for the same materials as you would put in your recycling carts. Please do not bag these items- they must remain loose inside the bins.

Make sure to cut and flatten your cardboard boxes so that we can maximize the space for everyone's needs! These bins get emptied every Monday & Thursday.

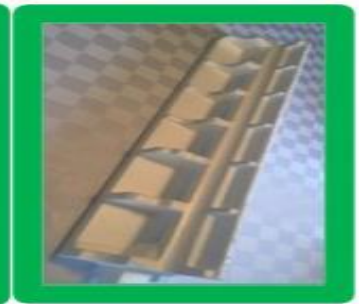
**DO NOT LEAVE ANY ITEMS ON THE GROUND OUTSIDE THE BINS!** This makes a mess for everyone, and may result in fines (the location is monitored by security cameras).

## We have added Styrofoam recycling!

At both locations we have added 2 white bins for **STYROFOAM** recycling!

Only the large white hard polystyrene Styrofoam is part of the program at this time;

- Styrofoam must be clean, dry, & free of tape, cardboard or other contaminants.
- Stack trays or large pieces intact
- Do not bag, keep loose in bin
- No EPS, Egg cartons, cups or packing chips





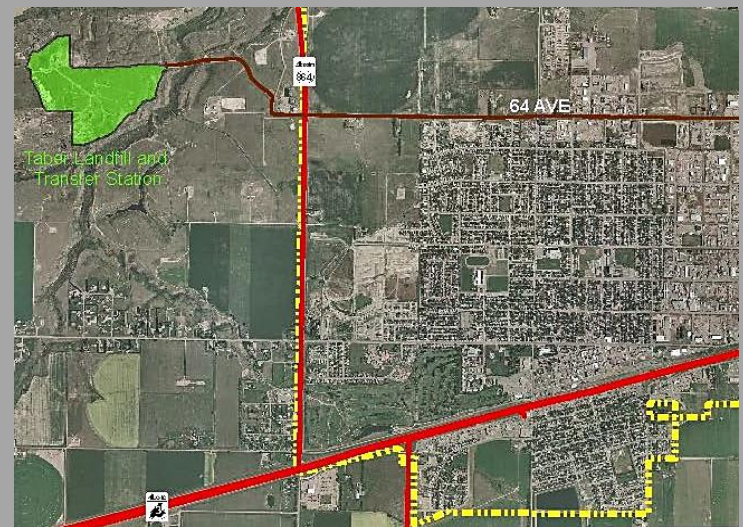
# Taber Transfer Station

Residents of Taber are very lucky to have a one-stop place for all their disposal needs only minutes from downtown!

The Town of Taber Transfer Station/Class III Landfill is located at 3000 Transfer Station Avenue, accessible off 64 Avenue west of Highway 864.

Hours of Operation: Tuesday to Saturday  
8:30 a.m. – 4:00 p.m. (last load across scale by 3:45p.m)

Site will be closed on Statutory Holidays



Material	Fee
<ul style="list-style-type: none"> <li>Scrap Metals,</li> <li>White Goods Appliances (Fridges, Stoves, etc.)</li> <li>Paint (Non-Commercial),</li> <li>E-Waste,</li> <li>Fluorescent Tubes,</li> <li>Batteries,</li> <li>Household Chemicals,</li> <li>Cardboard,</li> <li>Grass &amp; Tree Trimmings Under 4" in diameter,</li> <li>Propane &amp; Helium Tanks,</li> <li>Tires,</li> <li>Motor Oil &amp; Oil Filters</li> </ul>	<p>Free of Charge and Recycled by the Town</p>
<ul style="list-style-type: none"> <li>Mixed Solid Waste (general household garbage, Drywall, Shingles, Commercial Mixed Waste, Treated Wood, Furniture (mattresses, couches, etc. non-wood)</li> <li>Construction &amp; Demolition materials that have not been sorted.</li> <li><b>NO HAZARDOUS MATERIALS</b></li> </ul>	<p>Fee determined by weight &amp; subject to change *see Fee Bylaw for updates &amp; current costs (<a href="http://www.taber.ca/bylaws">www.taber.ca/bylaws</a>)</p>
<ul style="list-style-type: none"> <li>Untreated/Unpainted Wood</li> <li>Tree Trimmings/stumps over 4" in diameter,</li> <li>Asphalt and Concrete</li> </ul>	<p>Fee determined by weight &amp; subject to change *see Fee Bylaw for updates &amp; current costs (<a href="http://www.taber.ca/bylaws">www.taber.ca/bylaws</a>)</p>

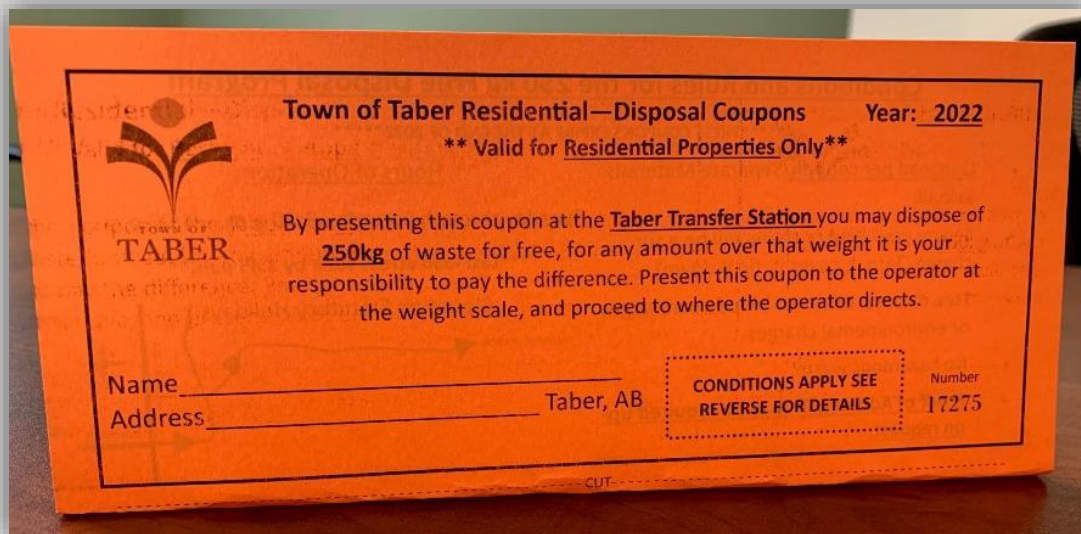
If you are unsure of where to bring a specific item, our scale attendant is there to help you sort it out, stop by the scale or phone 403-223-5569

You can also contact us at 403-223-6018 or by email at [pss@taber.ca](mailto:pss@taber.ca) with any questions.

# Coupon Voucher System

The Town issues coupons/vouchers to cover some of the disposal fees of large items that need to be taken to the Transfer Station. These coupons can be used by residents to dispose of additional waste that can't fit in the carts.

The goal of this program is to make spring cleanup etc. more convenient and affordable for residents. Additionally, the coupon service can be utilized year-round, so home renovations do not have to coincide with an annual service, but they are only valid for the year issued.



## Here's How It Works:

1. Each residential utility account holder in Taber will be eligible for 3 coupons per year.
2. Coupons can be picked up at the Town Administration Office (A 4900 50<sup>th</sup> Street) or the Public Works Shop (6201-A 54<sup>th</sup> Avenue). Proof of address may be required.
  - *Tenants need to check with their landlord before obtaining the coupons.*
3. Each coupon covers the disposal costs of 250 kilograms of waste each.
4. Coupons must be presented to personnel at the Taber Transfer Station weigh scale at the time of disposal. This is not available for commercial accounts.

# Paint Recycling

**The environmental fees Albertans pay when purchasing new paint products and containers helps fund the cost to recycle them...**

Albertans are some of the of the most dedicated recyclers in the world. **In 2019 alone, residents and businesses recycled 2.19 million litres of paint and 752,000 spray paint cans.** Leftover latex paint is recycled into usable latex, and oil-based paint is used as a fuel source in the energy recovery process. The metal containers are recycled into industrial products such as rebar and the plastic paint 'buckets' are shredded and manufactured into new plastic products.



**Paint and Paint Containers**



**Aerosol Paint Cans**

The paint recycling area is to the right of the scale house as you enter the Transfer Station. Place paint containers on the cart in front of the signed area for paint. Remember this is for cans that have paint left over (not empty cans)!

## Household Hazardous Waste (HHW)

### 1. What is the HHW Program

The Government of Alberta's HHW Program provides funding assistance to encourage municipalities to separate HHW from the overall municipal waste stream to ensure appropriate disposal in accordance with hazardous waste regulations.

### 2. What is HHW?

Toxic, flammable, corrosive, and reactive products generated from households.

HHW has at least one of the following properties:

- Toxic e.g. fabric softeners, household pesticides and herbicides
- Flammable e.g. nail polish remover, acetone, gasoline
- Reactive e.g. foam insulation
- Corrosive e.g. oven cleaners, toilet bowl cleaners, bleach

**If the above noted materials are received from a non-household entity such as commercial, industrial, or business generators they are not accepted in the HHW Program.**



The HHW recycling area is to the right of the scale house as you enter the Transfer Station. Place containers on the cart in front of the signed area for Household Hazardous Chemicals!



# Electronic Waste

The environmental fees Albertans pay when purchasing new TVs and computer equipment, ranging from \$1.20 - \$10.00, are used to help fund the cost to recycle them. There are recycling depots (collection sites) across the province where you can take your end-of-life electronics so they can be recycled in an effective, secure and environmentally safe manner.



Televisions



Computers & Servers



Laptops & Tablets



Printers, Copiers, Scanners & Fax Machines

The E-Waste recycling area is to the right of the scale house as you enter the Transfer Station along the fence line. Place the items pictured above on the pallet in front of the E-Waste totes!

## ELECTRONICS EXPANDED

Alberta recycling  
MANAGEMENT AUTHORITY



### SMALL APPLIANCES

Clock  
Fan  
Hair dryer  
Heater  
Iron  
Microwave  
Residential Air Conditioner  
Toaster  
Shaver  
Vacuum



### AUDIO VISUAL

CD Player  
Clock Radio  
Digital Camera  
DVD Player  
Headphones  
Satellite Dish  
Satellite Radio  
Speakers  
Video Camera



### TELECOM

Answering Machine  
Cell Phone  
Landline Phone  
Modem and Router  
Pager  
Satellite Phone  
Speakerphone



### POWER AND AIR TOOLS

Drill  
Grinder  
Miter Saw  
Nail Gun  
Residential Air Compressor  
Sharpener  
Shop Vacuum  
Skillsaw  
Table Saw



### GAMES, TOYS AND MUSIC

Action Figure  
Amplifier  
Guitar  
Keyboard  
Microphone  
Ride-on Toy  
Toy Robot  
Toy Vehicle  
Video Gaming Equipment

The E-Waste Pilot program recycling area is to the right of the scale house as you enter the Transfer Station along the fence line to the left of the regular e-waste items, place items in the totes provided under the blue signs!

If you have questions about what is accepted, ask the scale attendant or go to Alberta Recycling's website and they have printable lists of the extensive items that can be recycled!



Ask us about other electronics not listed above or visit [albertarecycling.ca/epilot](http://albertarecycling.ca/epilot)

# Used Oil Products

## Eligible Products and Fees

The environmental fees Albertans pay when purchasing new lubricating oil and oil filters, ranging from \$0.05 to \$1.00, are used to help fund the cost to recycle them. There are a number of recycling depots (collection sites) in the province where you can take your used oil materials so they can be recycled in an effective, secure and environmentally safe manner.



Lubricating Oil



Oil Containers



Oil Filters

The Used Oil products recycling area is to the right of the scale house as you enter the Transfer Station. Place containers on the yellow pallets in front of the Seacan signed area!

Make sure that the container is closed tightly so there is no spillage!

*All Oil Fluid and Oil Container (for container sizes of 50 Litres or less in BC, MB, SK, QC, NB, PE, NL and NS and 30 Litres or less in AB) Fluid is EHC applicable since it is not consumed in use and is available for collection and recycling.*

circulating oil	hydraulic fluid	polyester fluids	turbine oil
compressor oil	marine engine oil for vessels operating domestically	power steering	vegetable oil for lubrication
crankcase oil (petroleum or synthetic)	mineral heat transfer fluid	refrigeration system oil	
electrical insulating oil (Except for QC, NB, PE, NL & NS)	natural gas compressor oil not consumed in use	re-refined oil	
engine oil	paper machine oil	synthetic crankcase oil	
gear oil	petroleum crankcase oil	transmission fluid	

*Oil Container only (for container sizes of 50 Litres or less in BC, MB, SK, QC, NB, PE, NL and NS and 30 Litres or less in AB) Fluid is not EHC applicable since it is consumed in use and not available for collection and recycling.*

2-cycle engine oil	dripless lube	metal working oil	saw guide oil
agricultural spray	emulsified	natural gas compressor oil consumed in use	silicone
anti-seize lubricant	food grade white mineral oil	pneumatic system oil	textile oil
chain oil	form release oil	process oil	wiring pulling lubricant (petroleum or vegetable based)
conveyor lube	gasoline / 2-cycle engine oil mixes	quenching oil	
dedusting oil	machine tool and slideway lubricant	rock drill oil	
drawing, stamping and shaping oil	marine cylinder oil	rustproof oil	

### Oil Filters

spin-on or element style filter that is used in hydraulic, transmission or internal combustion engine applications including diesel fuel filter			
coolant filter	household furnace fuel filter	plastic / paper element style filter	sump type automatic transmission filter
diesel fuel filter used at retail & commercial pump islands	oil / air separator filter	storage tank diesel fuel filter	





# Tire Recycling

## Eligible Products and Fees

The environmental fees Albertans pay when purchasing new tires, ranging from \$4 - \$200, are used to help fund the cost to recycle them. And when buying new tires, they usually leave their old ones behind. This is because 2,200 vehicle and tire dealers and auto repair shops play a dual role - selling new tires and being a primary collection point for scrap tires destined for recycling at registered recycling facilities in Alberta.



Car & Light Truck  
Tires



Specialty Tires



Medium Truck  
Tires



Off-the-Road Tires



The Tire recycling area is to the left after going over the scale at the Transfer Station. Place tires in the signed concrete bunker area!

## Used Appliances & Scrap Metal



The Metal recycling area is further to the left of the tire bunker after going over the scale at the Transfer Station.

Place metals & used appliances in the signed concrete bunker area!

\*For used fridges or cooling appliances containing Freon, please place neatly in the signed area farthest west beside metal bunker, as the Freon needs to be removed!



# Refundable Beverage Containers



## Did you Know?:

You can take your rinsed empty beverage containers in for refund at Taber's approved Bottle Depot!

Tuesday to Saturday – 9:00am to 5:00pm

Closed Sunday & Monday



Taber Container Depot

6005 - 60 Avenue, Taber, Alberta T1G 2C1

 (403) 223-3661

# Used Clothing or Furniture Items



For all other household items that cannot be recycled, sold, given away or donated, please dispose of responsibly by taking down to the Transfer Station. Don't forget to use a coupon!

\* Donations are not accepted at the downtown recycling drop-off location. Please do not take them there as this creates an unsightly mess, and may result in fines (the location is monitored by cameras)